

Memorandum



CITY OF DALLAS

DATE May 2, 2018

Honorable Members of the Human and Social Needs Committee:

TO Councilmember Casey Thomas, II (Chair), Deputy Mayor Pro Tem Adam Medrano (Vice Chair), Mayor Pro Tem Dwaine R. Caraway, Councilmember Omar Narvaez, Councilmember Mark Clayton, Councilmember B. Adam McGough

SUBJECT **Mayor's Task Force on Poverty Update**

Summary

On May 7, 2018, Regina Montoya, Chair of the Mayor's Task Force on Poverty (MTFP), will brief the Human and Social Needs Committee on drivers of poverty in Dallas and solutions proposed by the MTFP.

Background

On August 10, 2017, the Human and Social Needs Committee was briefed on poverty in Dallas, the MTFP's short-term successes, and its next steps. The Committee provided feedback on actions planned and in progress, and work continued.

Purpose of the Briefing

The purpose of this briefing is to provide an update on the work being done by the MTFP and its proposed solutions.

Please contact me if you have questions or require any additional information.



Theresa O'Donnell
Chief of Resilience

c: Honorable Mayor and Members of the City Council
T.C. Broadnax, City Manager
Larry Casto, City Attorney
Craig D. Kinton, City Auditor
Biliera Johnson, City Secretary
Daniel F. Solis, Administrative Judge
Kimberly Bizzor Tolbert, Chief of Staff to the City Manager
Majed A. Al-Ghafry, Assistant City Manager

Jo M. (Jody) Puckett, Assistant City Manager (Interim)
Jon Fortune, Assistant City Manager
Joey Zapata, Assistant City Manager
M. Elizabeth Reich, Chief Financial Officer
Nadia Chandler Hardy, Chief of Community Services
Raquel Favela, Chief of Economic Development & Neighborhood Services
Directors and Assistant Directors

Mayor's Task Force on Poverty Update

**Human and Social Needs
Committee**

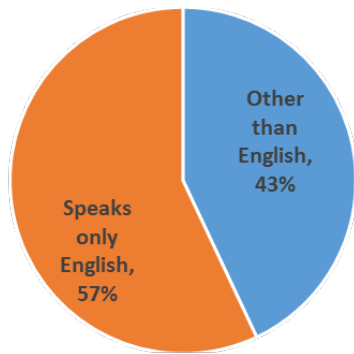
May 7, 2018

**Regina Montoya
Chair, Mayor's Task Force on Poverty**

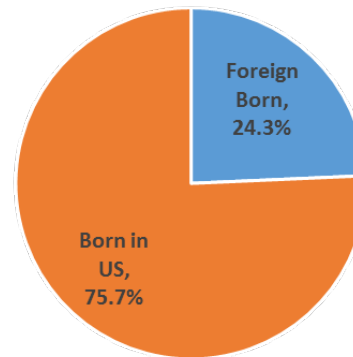
**Mark Clayton,
City Councilmember, District 9
Co-Chair and City Council Liaison,
Mayor's Task Force on Poverty**



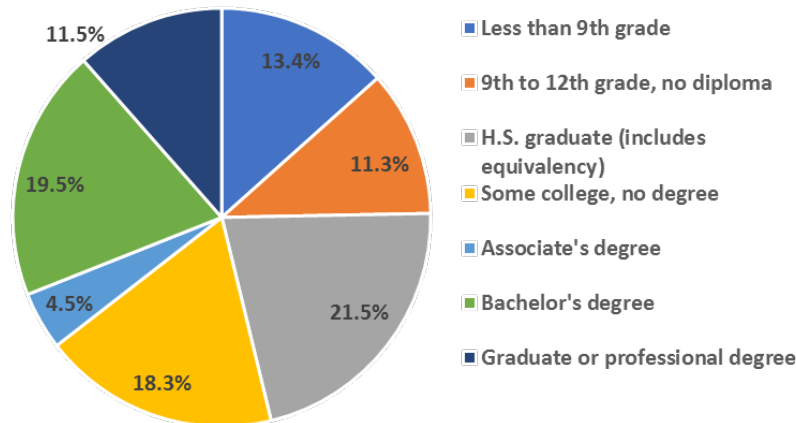
Dallas Today: A Snapshot



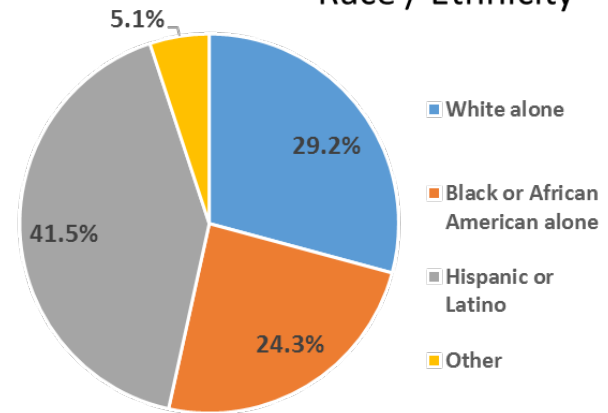
Language Spoken at Home



Educational Attainment



Race / Ethnicity



Source: U.S. Census Bureau, 2016 American Community Survey 5-Year Estimates



Dallas Poverty Facts

- Since 2000, the number of people in poverty in the City of Dallas has increased approximately 39.1%, while the City's total population increased by only about 7.6%.
- 27.7% of Hispanics and 30.9% of African Americans in Dallas live below the poverty line.
- 145,600 Latinos and 95,270 African Americans live in poverty in Dallas.

2016 Source: U.S. Census Bureau, 2016 American Community Survey 5-Year Estimates
2000 Source: U.S. Census Bureau Census 2000





Dallas County

ECONOMIC OPPORTUNITY ASSESSMENT

COMMUNITIES 
FOUNDATION of TEXAS

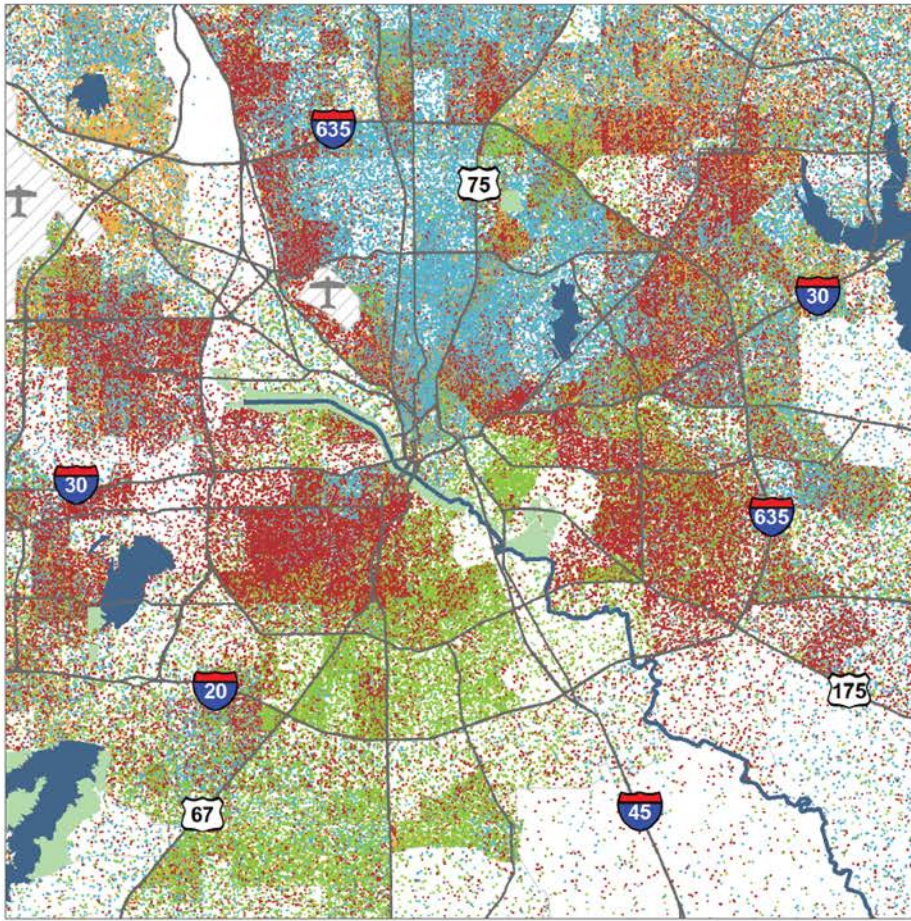
CENTER for PUBLIC POLICY PRIORITIES



@GiveWisely
@CPPP_TX



Dallas County is Geographically Segregated by Race and Ethnicity



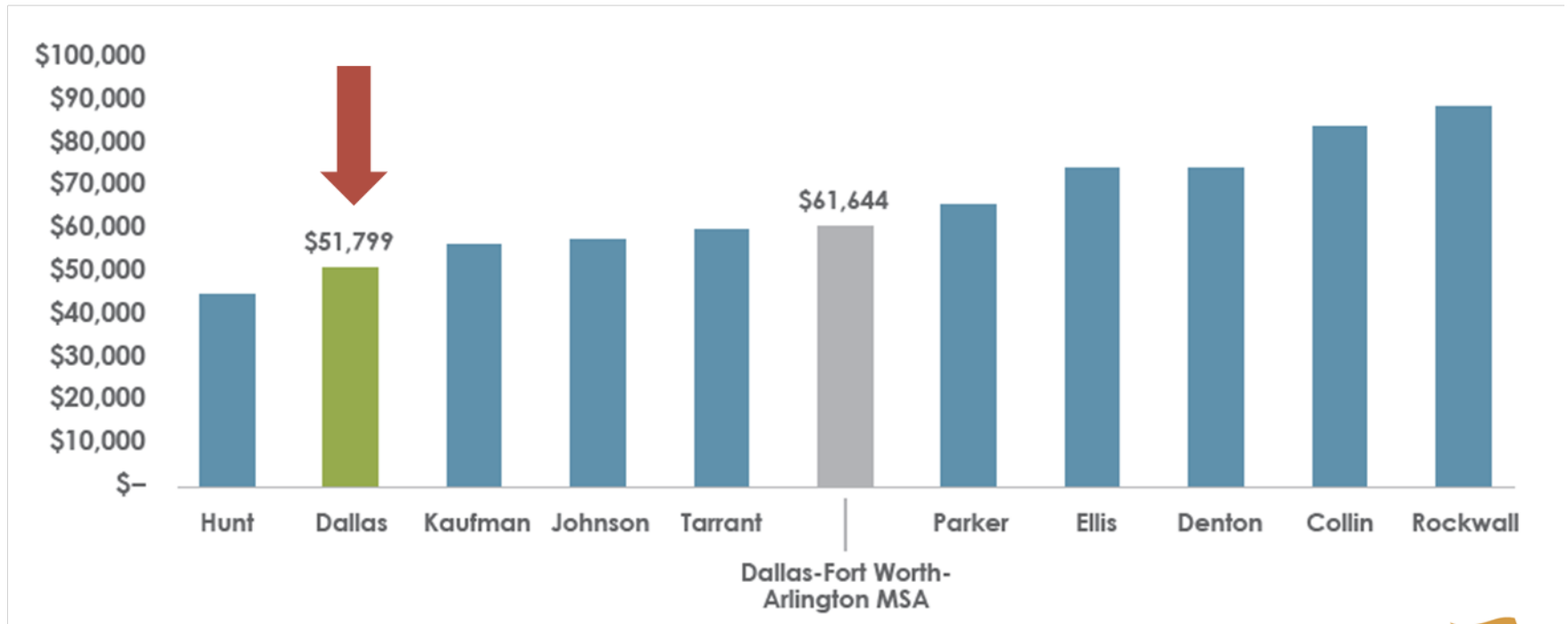
1 DOT = 10 PERSONS

- BLACK
- HISPANIC
- WHITE
- OTHER

US Census Bureau, 2010 Census



Dallas County's households have lower median income than most surrounding counties



2015 American Community Survey, U.S. Census Bureau

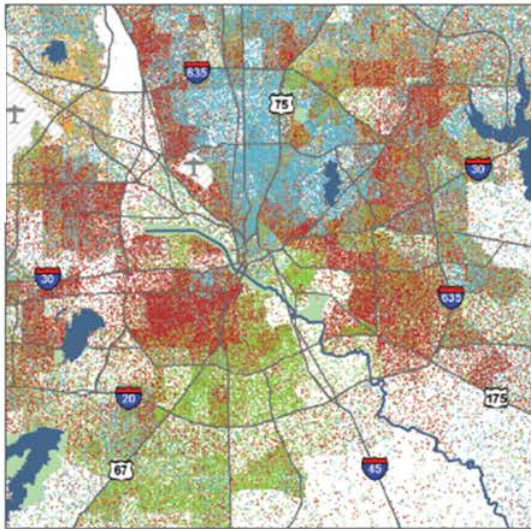


Clear connections between income and racial segregation in Dallas County

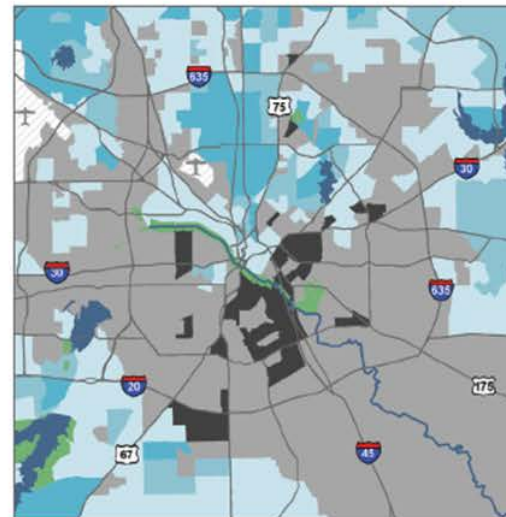
Population Density by Race and Ethnicity

1 DOT = 10 PERSONS

- BLACK
- HISPANIC
- WHITE
- OTHER



Median Household Income



MEDIAN HOUSEHOLD INCOME

- Less than \$25,000
- \$25,000 to \$49,999
- \$50,000 to \$74,999
- \$75,000 to \$99,999
- \$100,000 or more

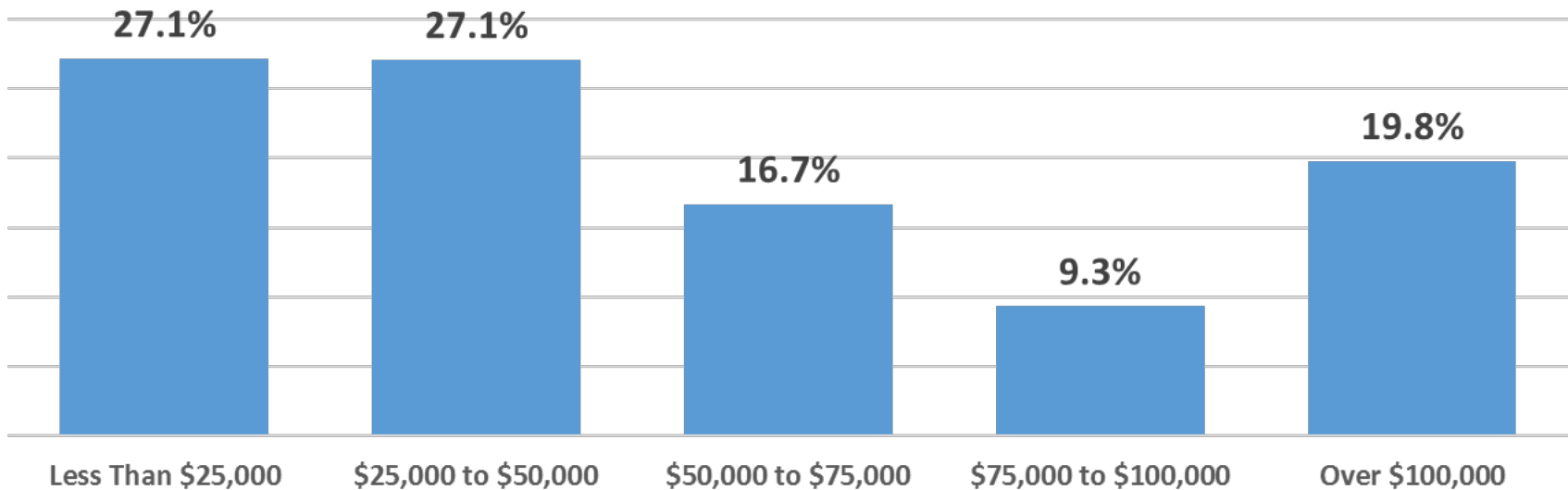
COMMUNITIES FOUNDATION of TEXAS

Drivers of Poverty in Dallas

- Sharp decline in median income
- Declining share of middle-income households/increasing numbers of “Have” and “Have-Not” neighborhoods

Dallas Household Incomes

Total Households	Less Than \$25,000	\$25,000 to \$50,000	\$50,000 to \$75,000	\$75,000 to \$100,000	Over \$100,000
514,588	132,443	132,018	81,389	45,485	96,520



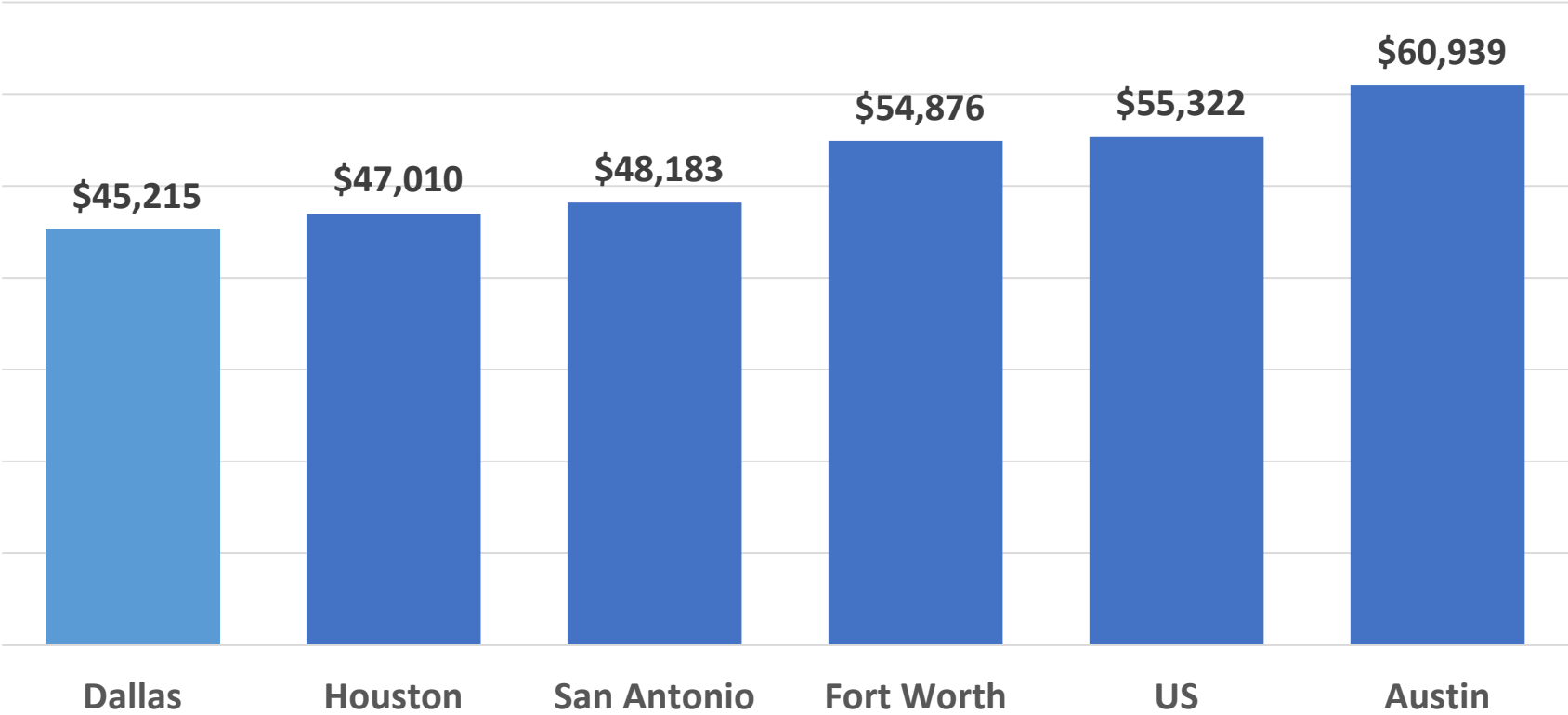
More than half of Dallas households make less than \$50,000 per year

Source: U.S. Census Bureau, 2016 American Community Survey 5-Year Estimates



Average Median Income

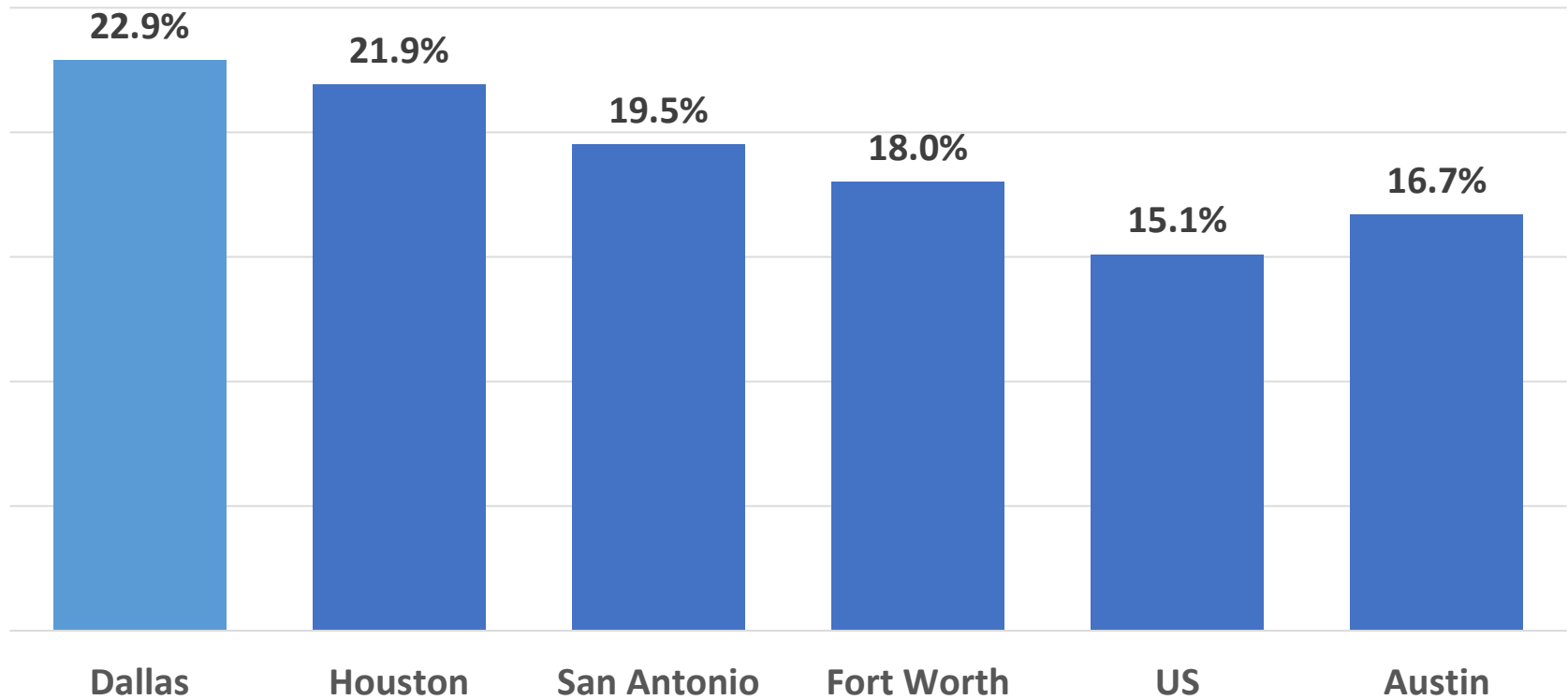
Median Income in 2016 Dollars



Source: U.S. Census Bureau, 2016 American Community Survey 5-Year Estimates

Percent of Population in Poverty

2016 Poverty Percentages



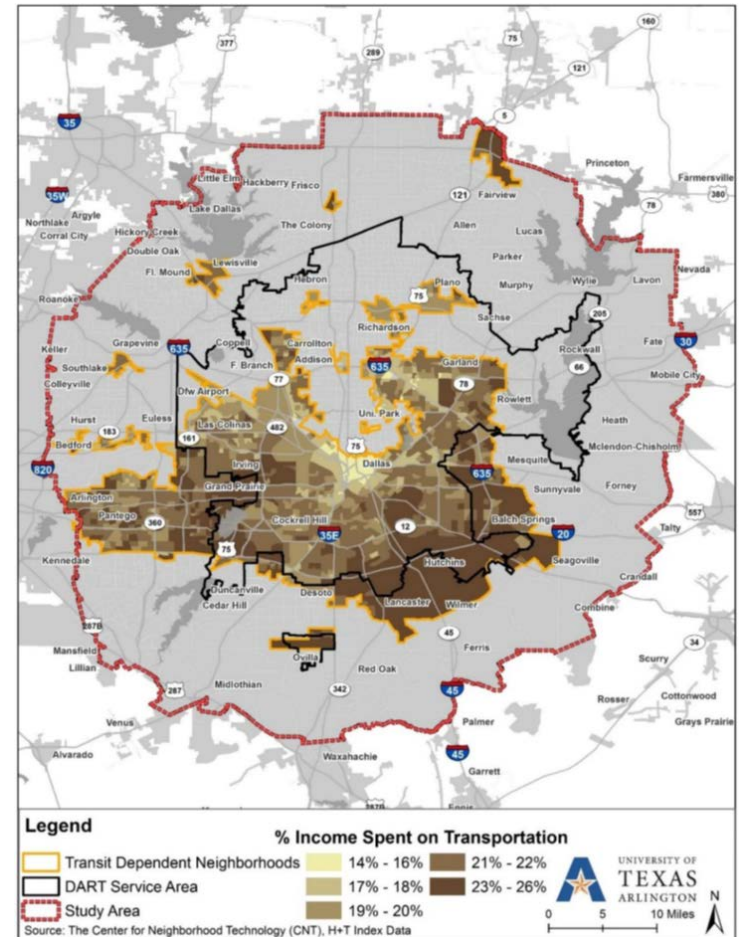
Source: U.S. Census Bureau, 2016 American Community Survey 5-Year Estimates

11



Drivers of Poverty in Dallas

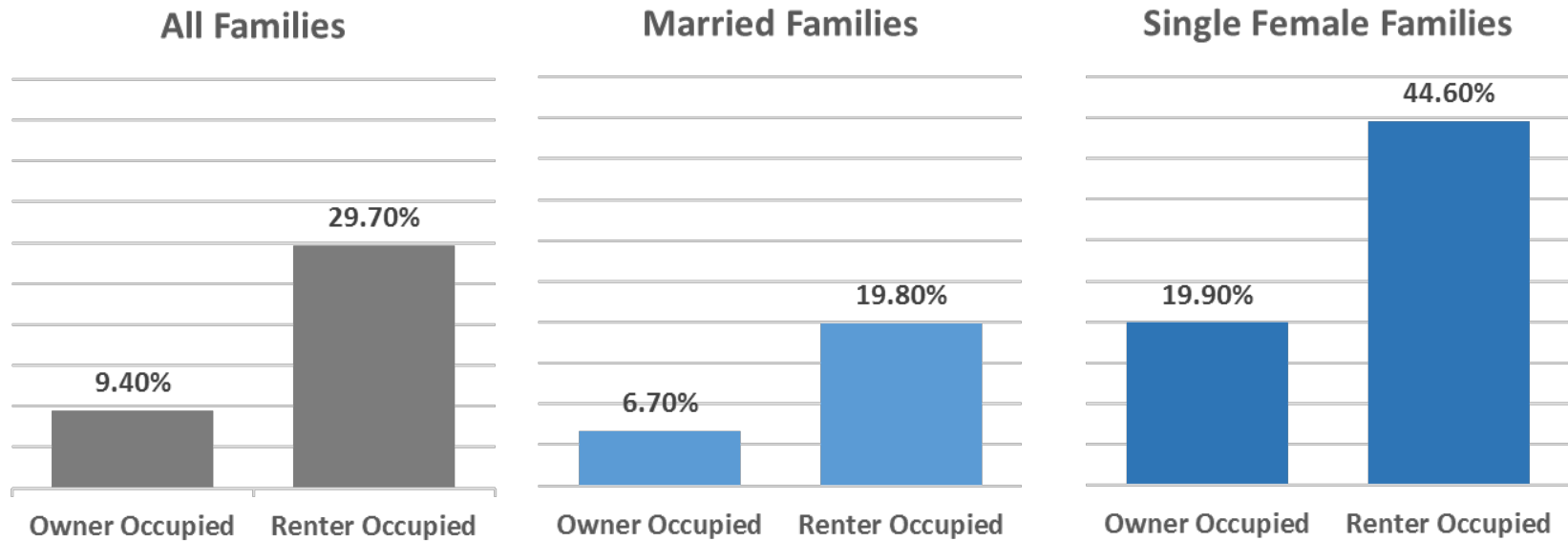
- Lack of affordable transportation
 - Average transportation cost in the U.S. is 15% of household income.
 - Dallas transportation costs range from 14% to 26%.
 - More than 73% of Section 8 Multifamily Affordable Housing properties in Dallas are unaffordable with regard to transportation costs.



Drivers of Poverty in Dallas

- Lack of home ownership/high rental percentage/single-family rentals

Poverty Rate by Housing Tenure and Family Type



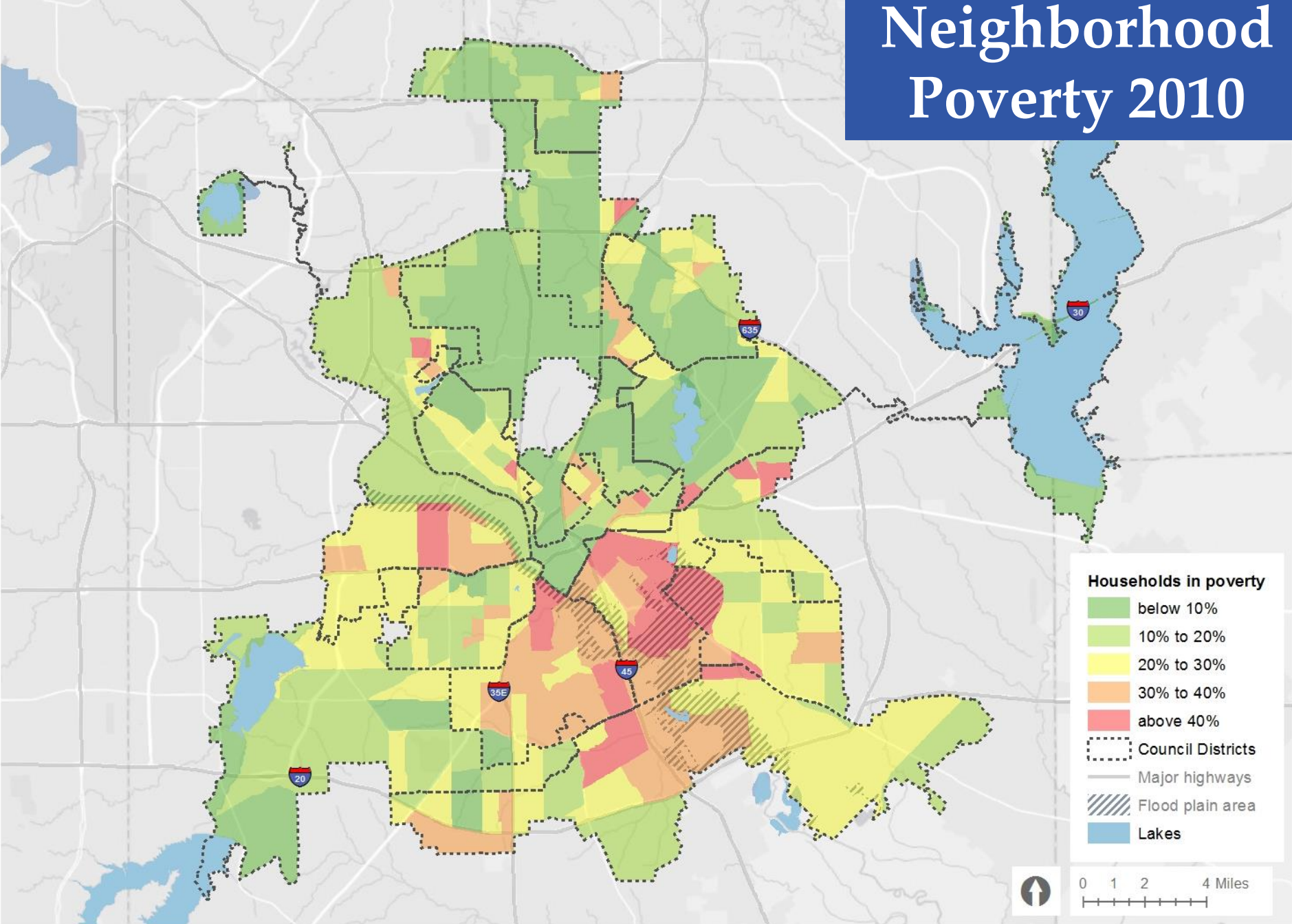
Source: U.S. Census Bureau, 2016 American Community Survey 5-Year Estimates

13

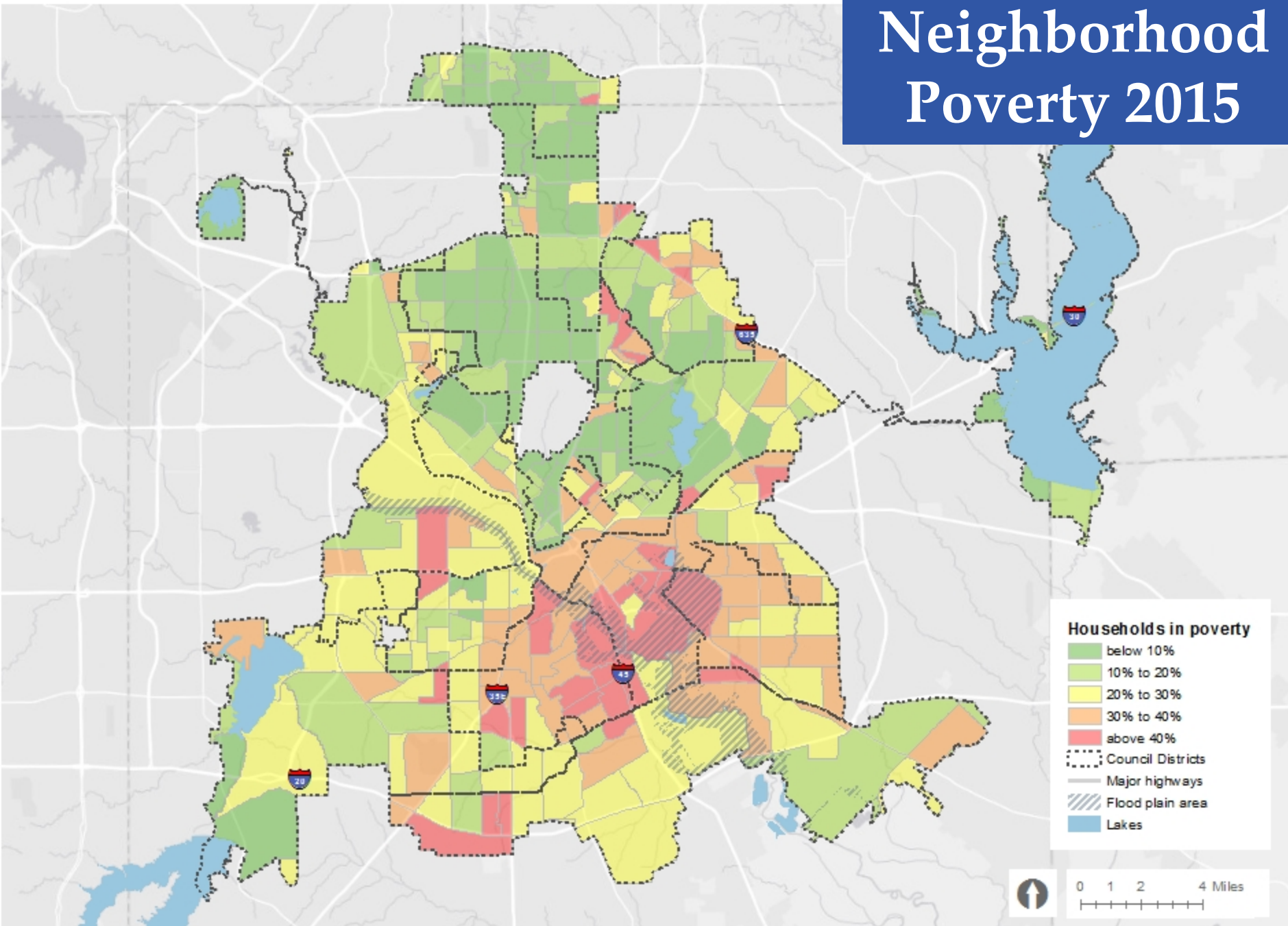
Drivers of Poverty in Dallas

- Neighborhoods of concentrated poverty, which are increasing

Neighborhood Poverty 2010



Neighborhood Poverty 2015



Households in poverty

- below 10%
- 10% to 20%
- 20% to 30%
- 30% to 40%
- above 40%

--- Council Districts
— Major highways
▨ Flood plain area
■ Lakes



Source: U.S. Census Bureau, Census 1990, 2000, 2010; American Community Survey 2015 5-Year Estimates. Map produced by City of Dallas Department of Planning and Urban Design

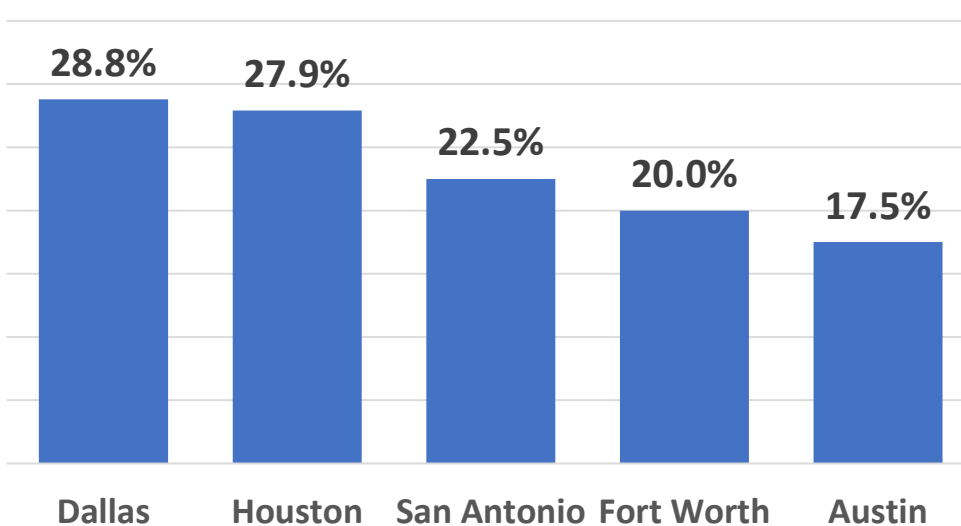
Drivers of Poverty in Dallas

- High number of households with children living in poverty

Children are the Face of Poverty

Too many families with children live in poverty.

% of Families w/ Children Below Poverty Level

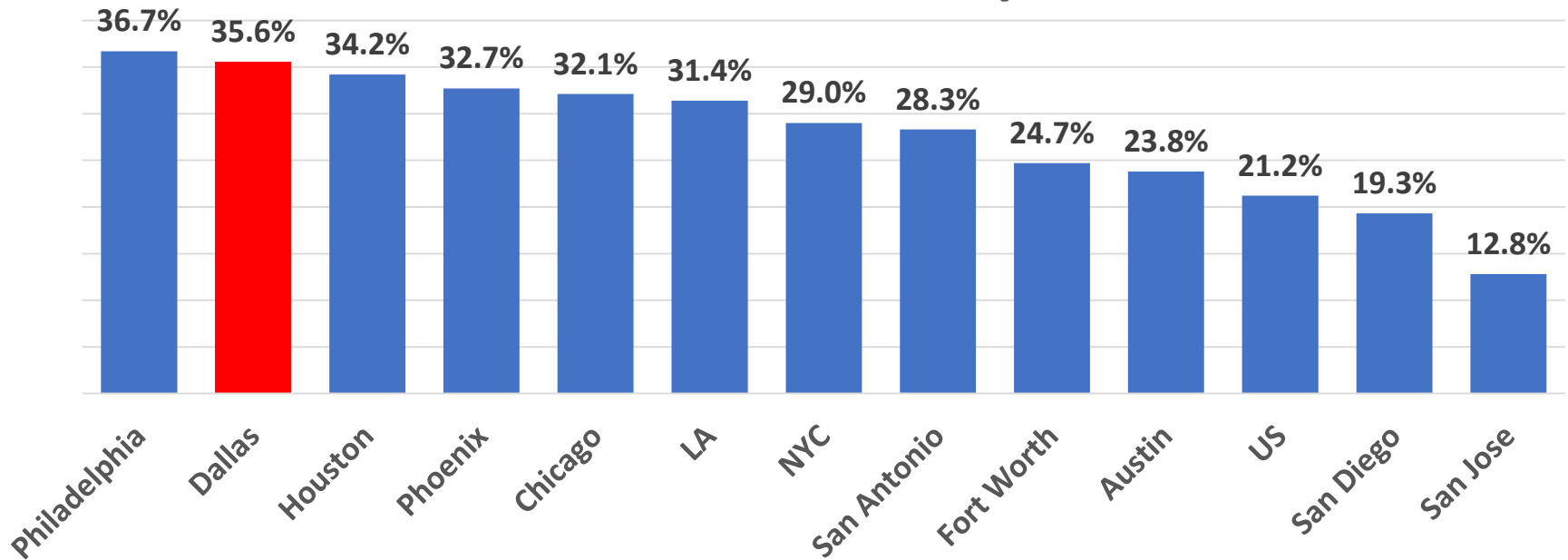


Source: U.S. Census Bureau, 2016 American Community Survey 5-Year Estimates

Impacts of Poverty on Children

Dallas has the second-highest child poverty rate among large U.S. cities.

Children in Poverty



Source: U.S. Census Bureau, 2016 American Community Survey 5-Year Estimates

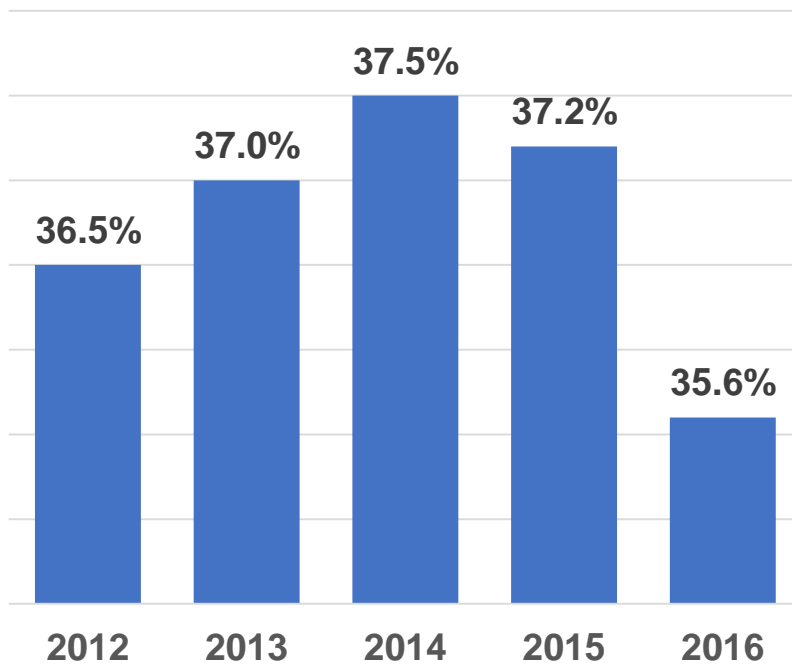
19



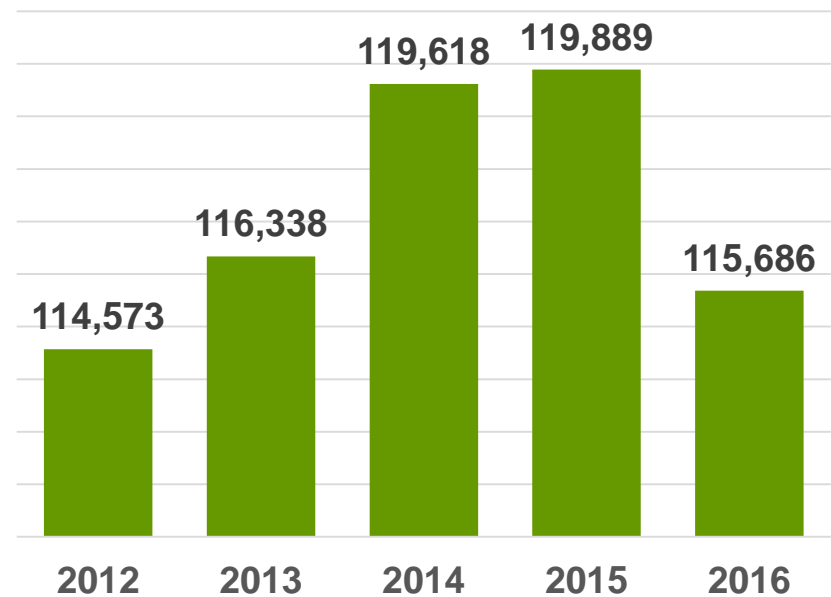
Impacts of Poverty on Children

However, we are improving...

Child Poverty Rate



of Children in Poverty



2012-2016 Source: U.S. Census Bureau, 2012-2016 American Community Survey 5-Year Estimates

20



Drivers of Poverty in Dallas

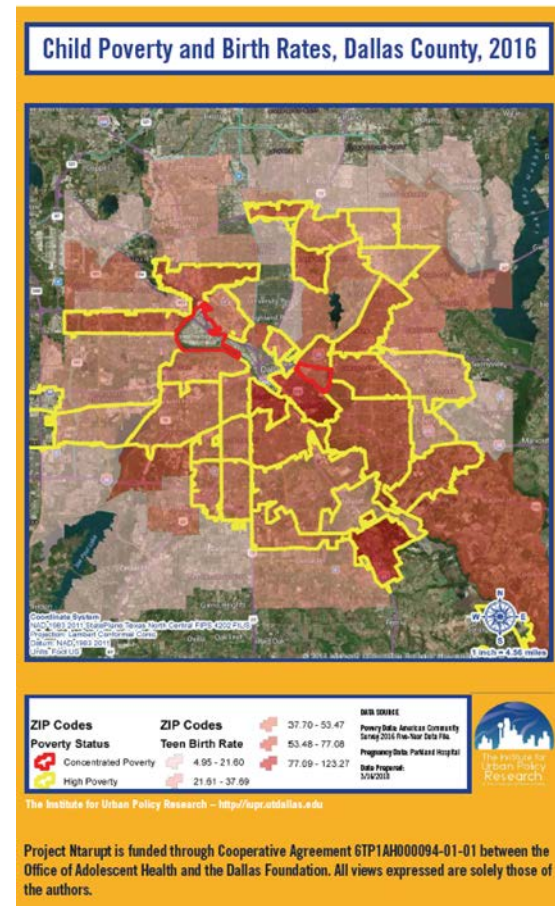
- Lack of educational attainment
 - 46.2% of Dallas residents have a high school degree or less
 - 13.4% less than 9th grade
 - 11.3% 9th to 12th grade, no diploma
 - 21.5% high school graduate (includes equivalency)

Drivers of Poverty in Dallas

- High percentage of limited English proficiency
 - 43% of Dallas residents speak a language other than English

Drivers of Poverty in Dallas

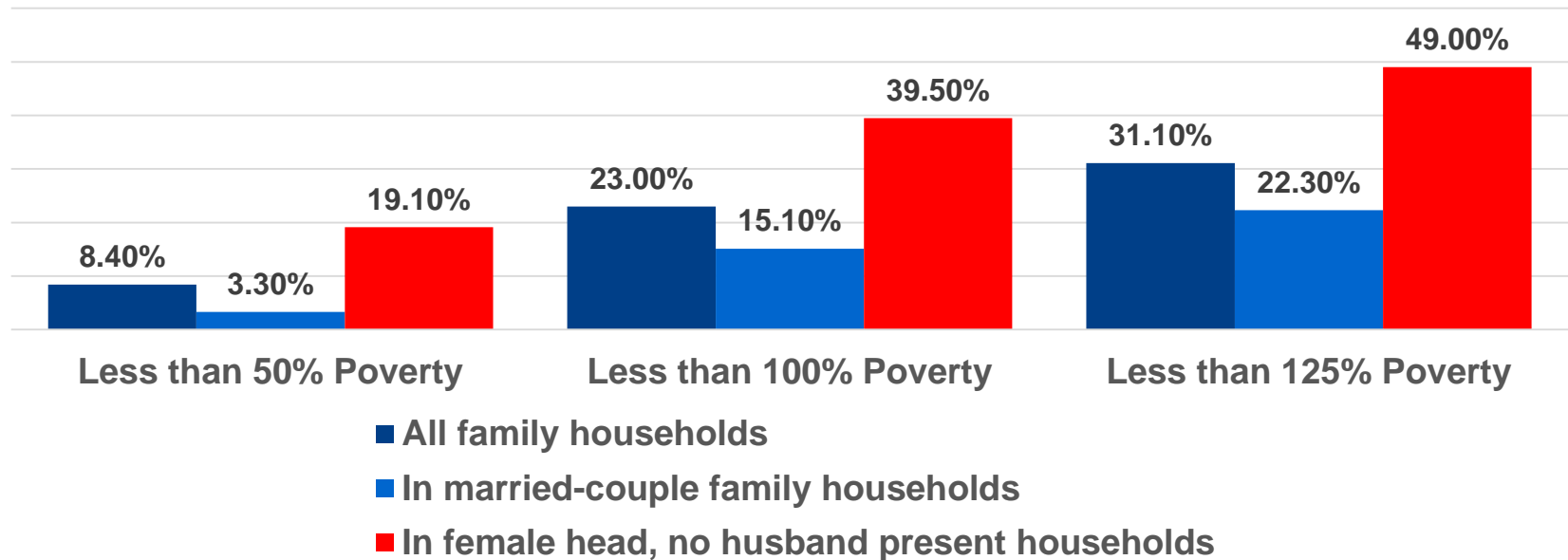
- High teen birth rates
 - U.S. rate: 22/1,000
 - Texas rate: 35/1,000 (5th highest in the nation)
 - Dallas County rate: 39/1,000
 - Selected Dallas zip codes: 53-123/1,000



Drivers of Poverty in Dallas

- High poverty rates for single women heads of households with children

Poverty Rate by Household Family Type



Source: U.S. Census Bureau, 2016 American Community Survey 5-Year Estimates

Solutions Update

- Operationalize a systemic approach to poverty alleviation through grant from Community Council of Greater Dallas
- Support funding for grants to Dallas Public Library and other providers for English-language acquisition and explore public/private/nonprofit partnerships to increase opportunities for English-language acquisition and literacy
- Support City of Dallas housing goals to guide a comprehensive housing policy:
 - Create and maintain available and affordable housing throughout Dallas
 - Promote greater fair housing choices
 - Overcome patterns of segregation and concentrations of poverty through incentives and requirements

Solutions Update

- Support CPPP solutions for transportation: “Establish goal for DART to reduce home-to-work travel time to under one hour for significant percentage of rider and transit mobility goals for DART to ensure access in currently underserved communities”
- Support and implement new City of Dallas initiatives regarding equity and inclusion for all neighborhoods
- Support initiatives focusing on amelioration of child poverty
- Support a qualitative approach to solutions for reducing the number of single women heads of household living in poverty

Solutions Update

- Support policy recommendation from CPPP: “A public-private partnership to establish Financial Opportunity Centers in targeted neighborhoods to provide access to Volunteer Income Tax Assistance sites, financial coaching, home ownership opportunities, workforce development, benefits access, GED testing and English language learning”
- Increased focus on teen pregnancy reduction, including support for media campaign
- Greater coordination with nonprofit community for enhanced delivery of services
- Development of metrics and analysis of national best practices for implementation in Dallas

Mayor's Task Force on Poverty Update

Human and Social Needs
Committee

May 7, 2018

Regina Montoya
Chair, Mayor's Task Force on Poverty

Mark Clayton,
City Councilmember, District 9
Co-Chair and City Council Liaison,
Mayor's Task Force on Poverty

